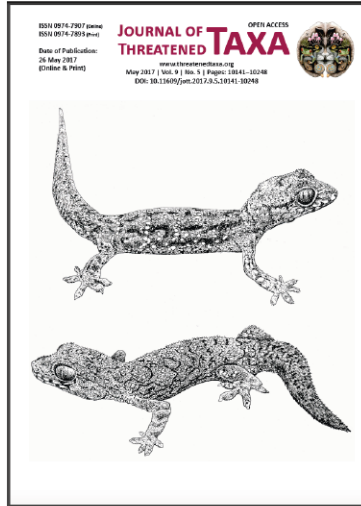


## OPEN ACCESS



The Journal of Threatened Taxa is dedicated to building evidence for conservation globally by publishing peer-reviewed articles online every month at a reasonably rapid rate at [www.threatenedtaxa.org](http://www.threatenedtaxa.org). All articles published in JoTT are registered under [Creative Commons Attribution 4.0 International License](https://creativecommons.org/licenses/by/4.0/) unless otherwise mentioned. JoTT allows unrestricted use of articles in any medium, reproduction, and distribution by providing adequate credit to the authors and the source of publication.



## Journal of Threatened Taxa

Building evidence for conservation globally

[www.threatenedtaxa.org](http://www.threatenedtaxa.org)

ISSN 0974-7907 (Online) | ISSN 0974-7893 (Print)

### NOTE

### *EUPHORBIA ROYLEANA* BOISS., (EUPHORBIACEAE) A NEW RECORD FOR THE EASTERN GHATS, INDIA

N. Sarojinidevi & Rudraraju Reddi Venkataraju

26 May 2017 | Vol. 9 | No. 5 | Pp. 10233–10235  
10.11609/jott.2640.9.5.10233-10235



For Focus, Scope, Aims, Policies and Guidelines visit [http://threatenedtaxa.org/About\\_JoTT](http://threatenedtaxa.org/About_JoTT)  
For Article Submission Guidelines visit [http://threatenedtaxa.org/Submission\\_Guidelines](http://threatenedtaxa.org/Submission_Guidelines)  
For Policies against Scientific Misconduct visit [http://threatenedtaxa.org/JoTT\\_Policy\\_against\\_Scientific\\_Misconduct](http://threatenedtaxa.org/JoTT_Policy_against_Scientific_Misconduct)  
For reprints contact <[info@threatenedtaxa.org](mailto:info@threatenedtaxa.org)>

Partner



Publisher/Host





***EUPHORBIA ROYLEANA* BOISS.,  
(EUPHORBIACEAE) A NEW RECORD FOR THE  
EASTERN GHATS, INDIA**

**N. Sarojinidevi<sup>1</sup> & Rudraraju Reddi Venkataraju<sup>2</sup>**

<sup>1,2</sup>Department of Botany, Sri Krishnadevaraya University, Anantapuramu, Andhra Pradesh 515003, India  
<sup>1</sup>sarojini.botany@gmail.com (corresponding author),  
<sup>2</sup>rrvenkataraju@yahoo.com

*Euphorbia* L., is the largest genus in the family Euphorbiaceae and the sixth largest genus among flowering plants, consisting of around 2,000 species and occurring throughout the world chiefly in tropical, subtropical and warm temperate regions. The genus is represented by 84 species in India and addition of *Euphorbia kadapensis* Sarojin. & R.R.V. Raju (2014), *E. gokakensis* S.R. Yadav, Malpure & Chandore (2016), and *E. seshachalensis* Prasad & Prasanna (2016). The genus stands at the top with 30 species endemic to India (Balakrishnan 1998; Binoj Kumar & Balakrishnan 2010).

During the present floristic studies in the Eastern Ghats of Odisha, flowering specimens of an unknown *Euphorbia* were collected from the region. After critical investigation of its diagnostic characters, the specimens were identified as *Euphorbia royleana* Boiss., hitherto unreported from the region (Images 1 & 2). On screening the relevant taxonomic literature (Saxena & Brahmam 1995; Binoj Kumar & Balakrishnan 2010), it was found that this species had no past record of its occurrence from anywhere in the Eastern Ghats. Therefore,

the present report of *E. royleana* is the first record for the region of the Eastern Ghats.



ISSN 0974-7907 (Online)  
ISSN 0974-7893 (Print)

***Euphorbia royleana* Boiss.**

in DC., Prodr.15(2):83.1862, nom. nov. pro. *E. pentagona* Royle, non Haw.1828; Brandis, For. Fl. northwestern India 438.1874; Hook.f., Fl. Brit.India 5:247.1887; Parker, For. Fl. Punjab 445.1918; Duthie, Fl.U. Gangetic Pl.3:76.1903; Collett, Fl. Simlensis 446.1921; Brandis, Indian Trees 558.1921; Gamble, Man. Indian Timb.591.1922; Bor, Man. Indian For.Bot.172. 1953; Babu, Herb. Fl. Dehra Dun 459.1977; Bir & Sharma in Indian For.106:744.1980; Polunin & Stainton, Fl. Himalaya 112.1984; Almeida, Fl. Maharashtra IVB: 319.2003.

Description: Shrubs or small trees, 2–4 m tall with dense crown, glabrous, stems woody, branched; branches whorled above, 5–7 angled, slightly projected 5mm long, blackish; spines paired, divaricate 2–4 mm long. Leaves alternate, sub-sessile, obovate-oblong attenuate at base, margin entire, apex mucronate, 4–10 by 2–4 cm, glabrous, fleshy, caducous, often absent when in flower, midnerve prominent. Cyathia sub-terminal and from internodal sinuses of branches, solitary, in diads or triads, the central one sessile, yellowish, primary peduncles 1-3 above the podarium, ca. 5mm long. Bracts ovate, acuminate, as long as involucre, membranous. Involucre turbinate, 3–4 by 4–5 mm, yellow, lobes 4, broad, fimbriate; glands 5, transversely oblong, ca. 3mm wide, ca. 1.5mm long. Staminate florets: pedicels ca. 1mm long, bracteoles lacinate, ca. 1.8 mm long, an-

**OPEN ACCESS**



**DOI:** <http://doi.org/10.11609/jott.2640.9.5.10233-10235>

**Editor:** N.P. Balakrishnan, Coimbatore, India

**Date of publication:** 26 May 2017 (online & print)

**Manuscript details:** Ms # 2640 | Received 31 February 2016 | Final received 09 April 2017 | Finally accepted 01 May 2017

**Citation:** Sarojinidevi, N. & R.R. Venkataraju (2017). *Euphorbia royleana* Boiss., (Euphorbiaceae) a new record for the Eastern Ghats, India. *Journal of Threatened Taxa* 9(5): 10233–10235; <http://doi.org/10.11609/jott.2640.9.5.10233-10235>

**Copyright:** © Sarojinidevi & Venkataraju 2017. Creative Commons Attribution 4.0 International License. JoTT allows unrestricted use of this article in any medium, reproduction and distribution by providing adequate credit to the authors and the source of publication.

**Funding:** UGC - No. F. No3-7/2011(SAP-II), Dt. 01.04.2011).

**Competing interests:** The authors declare no competing interests.

**Acknowledgements:** The first author thanks the University Grants Commission (UGC), New Delhi for financial support under SAP project (UGC Sanction Letter No. F. No3-7/2011(SAP-II), Dt. 01.04.2011). We thank the anonymous reviewers for their suggestions to improve this article, and Microsoft Corporation for the map used in this article.







Image 1. A - Distribution area of *Euphorbia royleana*; B - Close view of distribution



Image 2. *Euphorbia royleana*: A - Habit; B - Flowering branch; C - Branch with fruits; D - Cyathia; E - Staminate florets; F - Capsule. © A,B,E-- Sarojinidevi; © C,D,F - Navendu Page

thers sub-globose. Pistillate floret: gynophores 15mm long, ovary sub-ovoid, styles free from the middle, stigma shortly bifurcated. Fruits subglobose, trigonous with three compressed, obtuse cocci, 6–9 mm in diam., glabrous, greyish-green. Seeds sub-globose, 2–2.5 mm in diam., brown to pale black, ecarunculate.

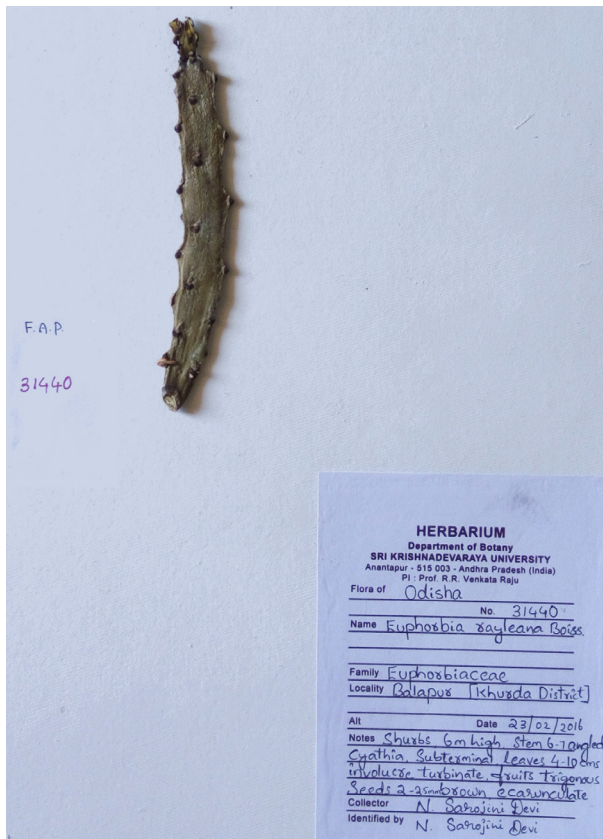
Habitat: Rare in scrub forests and dry rocky hill slopes.

Specimen examined: 31440 (SKU), 23.ii.2016, near Balapur, Khurda District, Odisha, coll. N. Sarojini Devi, at Sri Krishnadevaraya University Herbarium, Anantapuramu District, Andhra Pradesh, India (Image 3).

Distribution: In India, the species is hitherto known in the states of Himachal Pradesh, Punjab, Uttarakhand, Arunachal Pradesh, Nagaland, Meghalaya, Tripura and Assam. The present exploration extends its distribution to southeastern peninsula from Odisha as an extension of distribution from the northern states. The present study reports that *E. royleana* is now found in the Eastern Ghats region also (Image 1).

Phenology: Flowering and fruiting; February–June.

Specimens consulted: The collected species is matched with the authentic herbarium specimens stored at CAL Herbarium: Balik, Arunachal Pradesh, Burkill, 30.i.1912, 350m, Burkill 36508 (CAL); Lakshimpur, Sadiya, Arunachal Pradesh, 24.viii.1909, Burkill 32682 (CAL); Bahshar, Nirt, Himachal Pradesh, 24.iv.1891, Lace 847 (CAL).

Image 3. Herbarium of *Euphorbia royleana*

## References

- Balakrishnan, N.P. (1998).** Endemism in the family Euphorbiaceae of India, pp. 67–92. In: Mathew, P. & M. Sivadasan (eds.) *Diversity and Taxonomy of Tropical Flowering Plants*. Mentor Books, Calicut.
- Binojkumar, M.S. & N.P. Balakrishnan (2010).** *The genus Euphorbia L. (Euphorbiaceae) in India: A Taxonomic Revision*. Bishen Singh Mahendra Pal Singh, 291-337pp.
- Malpure, N.V., A.N. Chandore & S.R. Yadav (2016).** *Euphorbia gokakensis* (Euphorbiaceae) from sandstone formations in Karnataka, India. *Nordic Journal of Botany* 34(3): 380–383.
- Prasad, K. & P.V. Prasanna (2016).** *Euphorbia seshachalamensis* (Euphorbiaceae) a new species from Andhra Pradesh, India. *Annals of Botanic Fennici* 53(1–2): 73–76.
- Sarojidevi, N. & R.R. Venkataraju (2014).** *Euphorbia kadapensis* (Euphorbiaceae), a new species from southern India. *Phytotaxa* 181: 179–183.
- Saxena, H.O. & M. Brahman (1995).** *Flora of Orissa, Vol. III. Acanthaceae to Commelinaceae*. Orissa Forest Development Corporation Limited, Bhubaneswar, 1629–1642pp.







OPEN ACCESS



The Journal of Threatened Taxa is dedicated to building evidence for conservation globally by publishing peer-reviewed articles online every month at a reasonably rapid rate at [www.threatenedtaxa.org](http://www.threatenedtaxa.org). All articles published in JoTT are registered under [Creative Commons Attribution 4.0 International License](https://creativecommons.org/licenses/by/4.0/) unless otherwise mentioned. JoTT allows unrestricted use of articles in any medium, reproduction, and distribution by providing adequate credit to the authors and the source of publication.

ISSN 0974-7907 (Online); ISSN 0974-7893 (Print)

May 2017 | Vol. 9 | No. 5 | Pages: 10141–10248

Date of Publication: 26 May 2017 (Online & Print)

DOI: 10.11609/jott.2017.9.5.10141-10248

[www.threatenedtaxa.org](http://www.threatenedtaxa.org)

#### Article

**Dna barcoding, population genetics, and phylogenetics of the illegally hunted Philippine Duck *Anas luzonica* (Aves: Anseriformes: Anatidae)**

-- Ardea Mingoa Licuanan, Mariano Roy Martin Duya, Perry Sim Ong & Ian Kendrick Carandang Fontanilla, Pp. 10141–10150

#### Communications

**Population dynamics of medium and large mammals in a West African gallery forest area and the potential effects of poaching**

-- Emmanuel M. Hema, Yaya Ouattara, Mamadou Karama, Fabio Petrozzi, Massimiliano Di Vittorio, Wendengoudi Guenda & Luca Luiselli, Pp. 10151–10157

**A comparative study of avian diversity in Teknaf Wildlife Sanctuary, Inani Reserve Forest and Chittagong University campus in Bangladesh**

-- M. Farid Ahsan & Ibrahim Khalil Al Haidar, Pp. 10158–10170

**On two little-known terrestrial South Asian geckoes *Hemidactylus reticulatus* and *Hemidactylus scabriceps* (Reptilia: Gekkonidae)**

-- S.R. Ganesh, M. Rameshwaran, Naveen A. Joseph & Ahamed M. Jerith, Pp. 10171–10177

**Freshwater fish fauna of Hiranyakeshi River, the northern Western Ghats, India**

-- Pradeep Kumkar, Sanjay S. Kharat, Nitin S. Sawant, Umesh Katwate & Neelesh Dahanukar, Pp. 10178–10186

#### Short Communications

**A new species of sea squirt *Rhopalaea bilobata* (Ascidiacea: Diazonidae) from the Andaman Islands, India**

-- Jhimli Mondal, C. Raghunathan & Tamal Mondal, Pp. 10187–10193

**Observations on the association of *Scaphula deltae* Blanford (Mollusca: Bivalvia) in Garanga Wetland of Pobitora Wildlife Sanctuary, Assam, India**

-- Girindra Kalita, Pp. 10194–10197

**Butterfly fauna of Baghmundi, Purulia, West Bengal, India: a preliminary checklist**

-- Supriya Samanta, Dipanwita Das & Sudipta Mandal, Pp. 10198–10207

**Butterflies of the Kole Wetlands, a Ramsar Site in Kerala, India**

-- S. Sarath, E.R. Sreekumar & P.O. Nameer, Pp. 10208–10215

**A first record of three hitherto unreported species of bats from Kerala, India with a note on *Myotis peytoni* (Mammalia: Chiroptera: Vespertilionidae)**

-- Bhargavi Srinivasulu & Chelmala Srinivasulu, Pp. 10216–10222

#### Notes

**New distribution records of some wild crop relatives from India**

-- K. Pradheep, R.S. Rathi, K. Joseph John, S.M. Sultan, B. Abraham, Anjula Pandey, E. Roshini Nayar, S.P. Ahlawat & Rita Gupta, Pp. 10223–10228

***Ixora polyantha* Wight (Rubiaceae) a new record for northeastern India**

-- Deiji Narah, Nazir Ahmad Bhat & Yogendra Kumar, Pp. 10229–10232

***Euphorbia royleana* Boiss., (Euphorbiaceae) a new record for the Eastern Ghats, India**

-- N. Sarojinidevi & Rudraraju Reddi Venkataraju, Pp. 10233–10235

**Notes on the extended distribution of two threatened species of *Strobilanthes* Blume (Acanthaceae) in Kerala, India**

-- E.J. Josekutty, P. Biju & Jomy Augustine, Pp. 10236–10239

**A first report of the Broad-Tail Royal *Creon cleobis* Godart, 1824 (Insecta: Lepidoptera: Lycaenidae) and its host plant from Agasthyamalai Biosphere Reserve of the southern Western Ghats, India**

-- Raveendran Lekshmi, Pp. 10240–10241

**A photographic record of the Rusty-spotted Cat *Prionailurus rubiginosus* (Mammalia: Carnivora: Felidae) in a forest plantation on the east coast of Tamil Nadu, India**

-- M. Bubesh Guptha & M. Eric Ramanujam, Pp. 10242–10245

**Stomach contents of the Indian Pangolin *Manis crassicaudata* (Mammalia: Pholidota: Manidae) in tropical forests of southern India**

-- Mohanarangan Ashokkumar, Dipika Valsarajan, M. Arjun Suresh, Anuraj R. Kaimal & George Chandy, Pp. 10246–10248